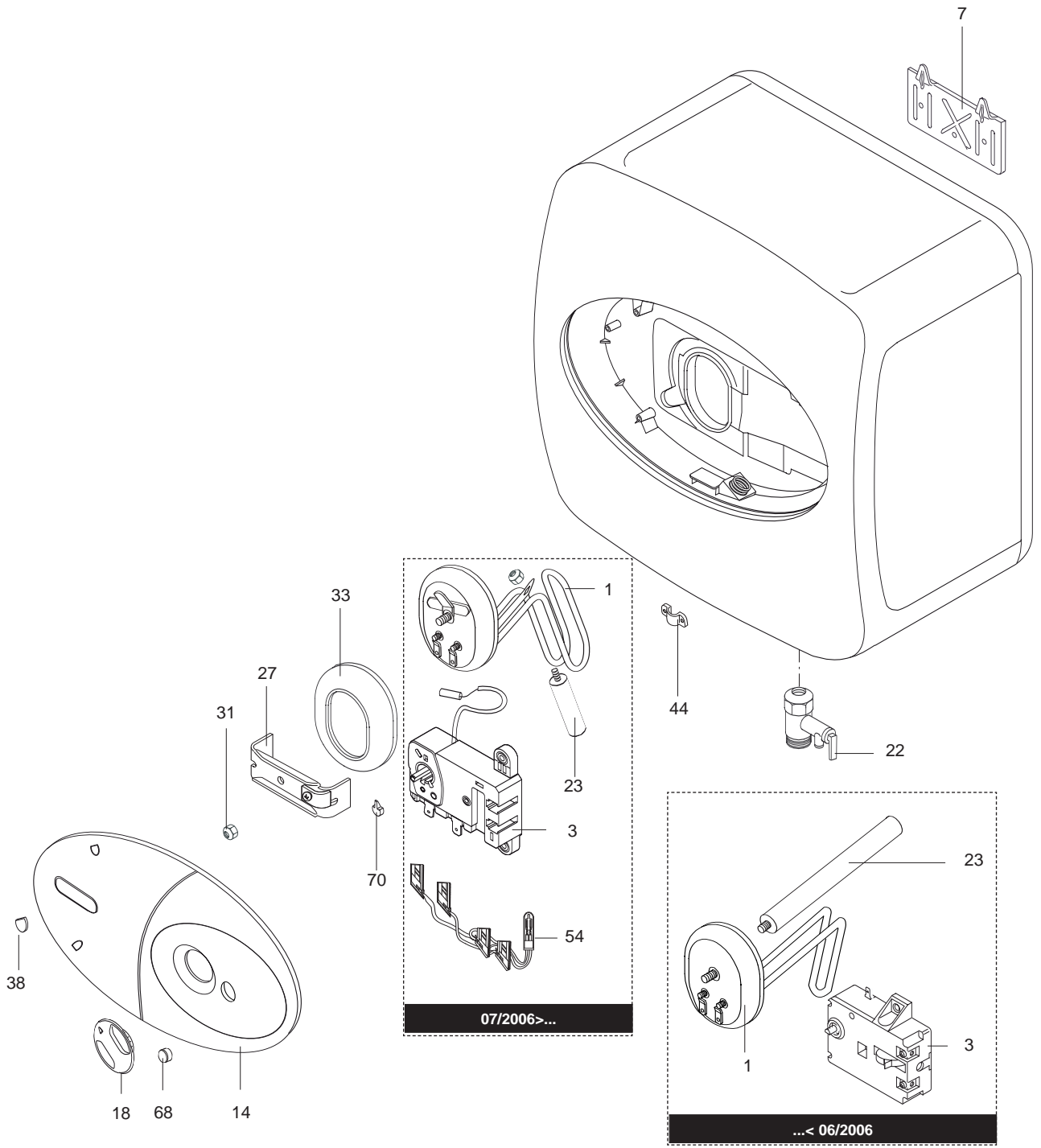


Á Á Á  
 Á

## VEÛP OËJÒÀÒÒ

Ùì GÍ || JÈGÒP ÁZÒáá } ÁEGÁFFB JDEÍ

877 098		TI-SHAPE 10 OR EE	...	...
877 099		TI-SHAPE 10 UR EE	...	...
877 100		TI-SHAPE 15 OR EE	...	...
877 101		TI-SHAPE 15 UR EE	...	...
877 102		TI-SHAPE 30 OR EE	...	...
Reference	Ind.	Model type	Begin	End



Key№ / Позиция№	Description	Наименование	Code/Код	Type/Тип	50	80	100	From / Начиная с	To / До
<b>11 09 2006</b>		<b>R8215449-02EN</b>							
0001	ELEMENT 1500W 220-240V	ТЭН 1500Вт 220-240В	65103766		*	*	*	07/06	
	ELEMENT 1500W 220-240V	ТЭН 1500Вт 220-240В	990966				*		06/06
	ELEMENT 1500W 220-240V	ТЭН 1500Вт 220-240В	990967		*	*			06/06
0003	THERMOSTAT	Термостат регулировочный	65101079				*		06/06
	THERMOSTAT	Термостат регулировочный	65103771		*	*	*	07/06	
	THERMOSTAT	Термостат регулировочный	691499		*	*			06/06
0007	HEATER WALL HANGING BRACKET	Кронштейн настенного крепления	570341		*	*	*		
0014	PLASTIC COVER	Крышка пластиковая	65100872		*	*	*		06/06
	PLASTIC COVER + NEON LENS	Крышка пластиковая + светофильтр индикаторной лампы	65103778		*	*	*	07/06	
0018	KNOB	Ручка	65100875		*	*	*		
0022	SAFETY VALVE	Предохранительный клапан	571730		*	*	*		
0023	ANODE (D:15 L:210)	Магниевый анод (D:15 L:210)	570241				*		06/06
	ANODE D.13,8 L:150 M5	Магниевый анод D.13,8 L:150 M5	574305		*	*			06/06
	ANODE (D:21,3 L:110 )	Магниевый анод (D:21,3 L:110 )	65103768				*	07/06	
	ANODE (D:21,3 L:80)	Магниевый анод (D:21,3 L:80)	65103793		*	*		07/06	
0027	FLANGE BRACKET	Фиксатор фланца	570024		*	*	*		
0031	NUT M6	Гайка М6	570069		*	*	*		
0033	FLANGE GASKET	Уплотнение фланца	65100282		*	*	*		
0038	SCREW COVER	Заглушка	65100874		*	*	*		
0044	CABLE CLAMP	Фиксатор кабеля	573266		*	*	*		
0054	WIRING	Проводка	65104037		*	*	*	07/06	
0068	SIGNAL LAMP CAP	Колпачек индикаторной лампы	573070		*	*	*		
0070	CAP (REGULATION)	Колпачек (термостат регулировочный)	570029		*	*	*		

## LIST OF THE ABBREVIATIONS

HW .....	: Hot water.
CW .....	: Cold water.
C .....	: Ceramic resistance (normal heating).
Ca .....	: Ceramic resistance (accelerated heating)
TP .....	: Immersion heater.
1F .....	: With fittings.
2F .....	: Without fittings.
3F .....	: With fittings and another outlet connection.
AMI .....	: With mixing valve.
SMI .....	: Without mixing valve.
PUISS .....	: Power of th appliance.
PN .....	: Appliance with normal pression.
LP .....	: Appliance with low pression.
PV .....	: Appliance with variable power.
PF .....	: Appliance with fixed power..

## IDENTIFICATION PLATE

### SERIAL NUMBER

Ex: 03 09 08

Manufacturing day  
 Month of manufacture : from 1 to 12 → January to December  
 Year of manufacture

OR

Ex: 02 11 00001 007843

Product reference  
 Sequential number  
 Month of manufacture : from 1 to 12 → January to December  
 Year of manufacture

The indications mentioned on the prices, commercial or technical literature and the scheme are written for your guidance and are available at a given time. The CONSTRUCTOR retains the power to modify the presentation, the form, the size, the conception or the material of the products.